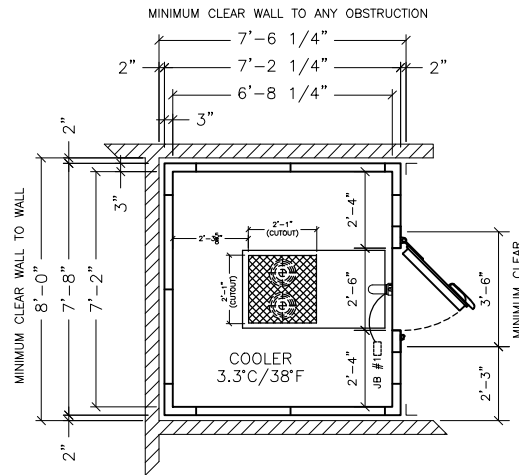


# SPECIFICATIONS



- FINISH:** WHITE EMBOSSED INTERIOR AND EXTERIOR.
- INSULATION:** 3" FOAMED IN PLACE THERMOSET POLYURETHANE.
- FLOORS:** NONE. WALK-IN IS TO BE INSTALLED ON FINISHED, LEVEL BUILDING FLOOR. BUILDING FLOOR FINISH BY OTHERS. NOTE: IF FLOOR UNDER COOLER IS NOT SLAB-ON-GRADE THE GENERAL CONTRACTOR MUST PROVIDE ADEQUATE INSULATION ON THE UNDERSIDE OF THE FLOOR SLAB WHERE COOLER IS LOCATED, WITH INSULATION EXTENDING 12" BEYOND ALL SIDES OF WALK-IN ROOM. (PLEASE ADVISE IF BUILDING FLOOR IS TO BE TILED BEFORE OR AFTER WALK-IN INSTALLATION).
- DOORS:** ROOM COMPLETE WITH ONE INFITTING DOOR WITH MAGNETIC GASKET, DOOR CLOSER, INSIDE SAFETY RELEASE, BRUSHED ALUMINUM HARDWARE AND PROVISIONS FOR A PADLOCK SUPPLIED BY OTHERS.
- LIGHTS:** DOOR PANEL COMPLETE WITH ONE INTERIOR VAPOUR PROOF LIGHT FIXTURE, INTERWIRED TO A THERMOMETER, PILOT LIGHT AND SWITCH, PRE-WIRED TO JUNCTION BOX, ABOVE WALK-IN, (EXTERIOR CEILING), READY FOR FINAL ELECTRICAL CONNECTION BY OTHERS.
- TRIM:** VERTICAL TYPE WHERE SHOWN ON DRAWING. (PLEASE SPECIFY TYPES AND SIZES REQUIRED).
- REFRIGERATION:** TOP-MOUNTED, SELF-CONTAINED, FACTORY PREWIRED. C/W PENTHOUSE COIL SYSTEMS.

## WALK-IN COOLER 3.3°C/38°F

**CONDENSING UNIT:** PTN-063M6B 3/4 H.P. AIR-COOLED  
208/230/1/60 R-404A

**COMPLETE WITH:** EVAPORATOR COIL  
EXPANSION VALVE  
ROOM THERMOSTAT  
SOLENOID VALVE  
CORD AND PLUG

**WORK BY OTHERS:** FINAL POWER AND INTERWIRING (SEE WIRING DIAGRAMS); ALL PLUMBING AND DRAINS; FREEZER DRAIN LINE HEATER IS SUPPLIED BY CURTIS, BUT PROPER INSTALLATION IS THE RESPONSIBILITY OF A QUALIFIED ELECTRICIAN AND PLUMBER (SEE DETAIL ON THIS DRAWING); CUTTING, CORING AND PATCHING OF BUILDING STRUCTURE; LEVELING AND GROUTING OF BUILDING FLOOR TO ACCOMMODATE WALK-IN ROOMS; FINAL FLOOR FINISHES.

### IMPORTANT NOTE!

AS THESE SYSTEMS ARE AIR COOLED IT IS THE OWNERS RESPONSIBILITY TO PROVIDE ADEQUATE VENTILATION AT THE CONDENSING UNIT LOCATIONS FOR PROPER OPERATION AMBIENT TEMPERATURE MUST NOT EXCEED 90°F, OR DROP BELOW 50°F.

### AMBIENT TEMPERATURE FACTOR

THE COOLING UNIT ON THIS WALK IN HAS THE ABILITY TO MAINTAIN COOLER TEMPERATURES AT 38°F/4°C AND FREEZER TEMPERATURES AT -10°F/-23°C AS LONG AS THE AMBIENT TEMPERATURES AT THE UNIT DOES NOT EXCEED 90°F/32°C.

**WARNING** — OPERATING THESE UNITS AT HIGH AMBIENT TEMPERATURES WILL DECREASE THE LIFE OF COMPRESSOR, VOID YOUR WARRANTY AND CAUSE HIGHER THAN NORMAL OPERATING COSTS.

### IMPORTANT NOTE!

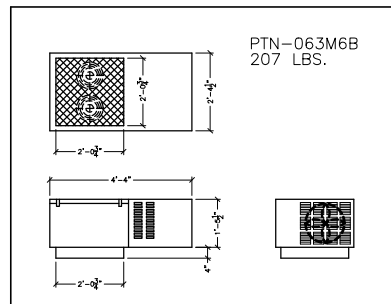
WALK-IN COOLERS AND FREEZERS MUST BE LOCATED IN A WELL VENTILATED AREA TO PREVENT MOISTURE FROM CONDENSING ON EXTERIOR SURFACES.

### IMPORTANT NOTICE!

PLEASE BE ADVISED THAT IN CONFORMANCE WITH THE INDUSTRY STANDARD PRACTICE, CANADIAN CURTIS REFRIGERATION INC. ASSUMES NO RESPONSIBILITY FOR PRODUCT OR PRODUCTION LOSSES DUE TO MALFUNCTION OR FAILURE OF THE EQUIPMENT, HOWEVER CAUSED. IT IS THE RESPONSIBILITY OF THE EQUIPMENT OWNER OR OPERATOR TO SECURE APPROPRIATE PROTECTIVE INSURANCE.

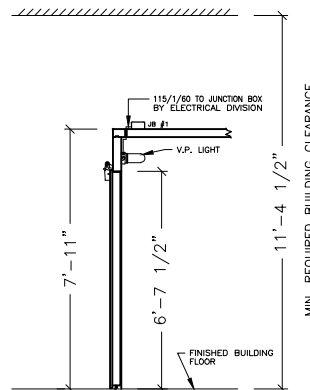
**ALSO NOTE:** DO NOT ACTIVATE ELECTRICAL POWER TO WALK-IN DOOR FRAME UNTIL AFTER REFRIGERATION SYSTEM OPERATIONAL.

VENTILATION REQUIREMENTS		
ROOM	COND. UNIT HEAT OF REJECTION	MIN. VENTILATION AT COND. UNIT
COOLER	9,055 BTUH	1,132 CFM.



PTN-063M6B  
207 LBS.

A MINIMUM OF 2" CLEARANCE FOR COOLER  
A MINIMUM OF 3" CLEARANCE FOR FREEZER  
IS REQUIRED BETWEEN WALK-IN  
WALLS AND ALL BUILDING WALLS.



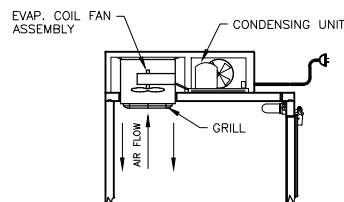
COOLER DOOR SECTION

### NOTE:

THESE PENTHOUSE UNITS NEED A MINIMUM CLEARANCE OF 2'-0" ABOVE UNIT FOR VENTILATION AND SERVICE.

### PENTHOUSE COIL DETAIL

SCALE: N.T.S.

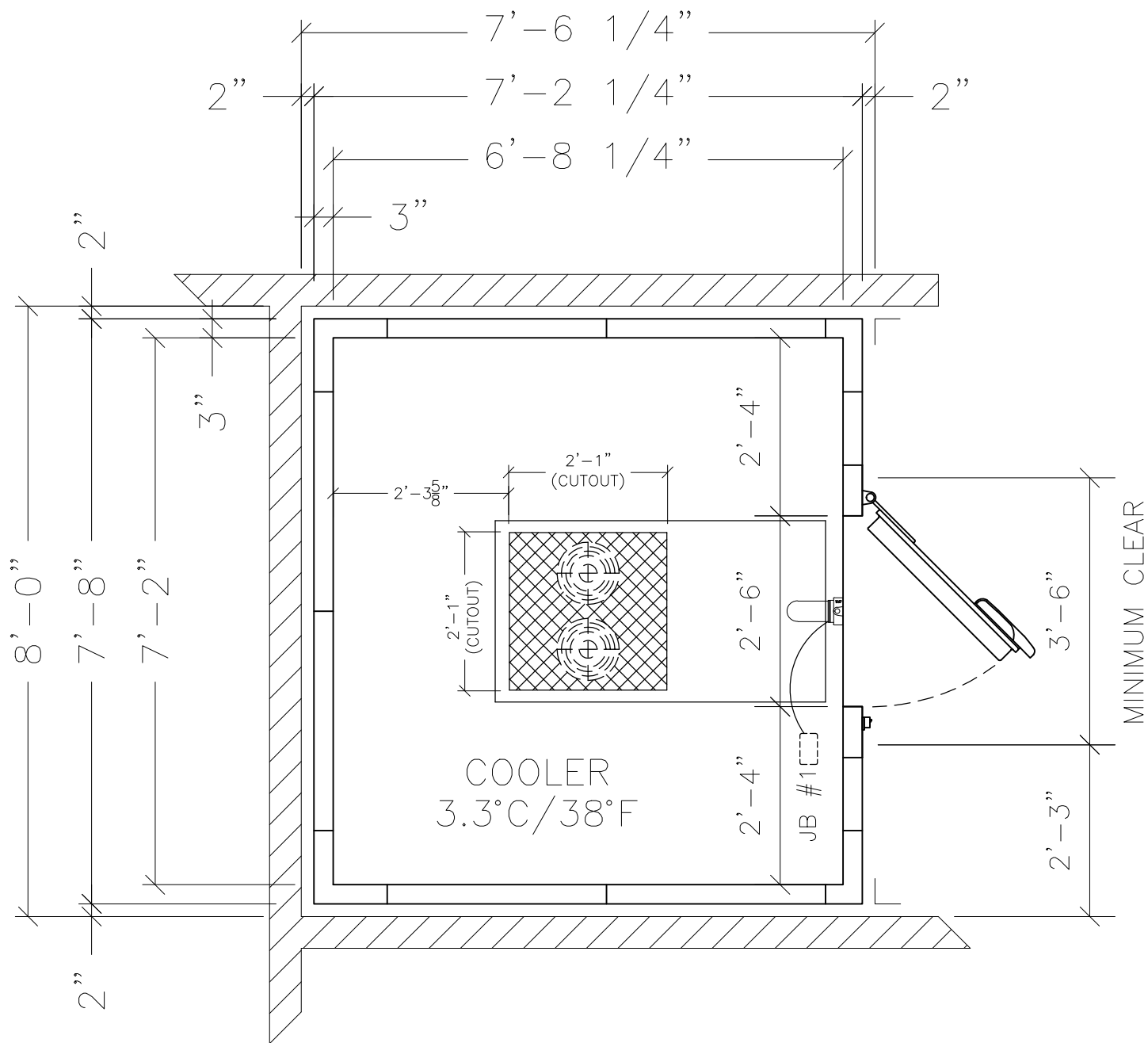


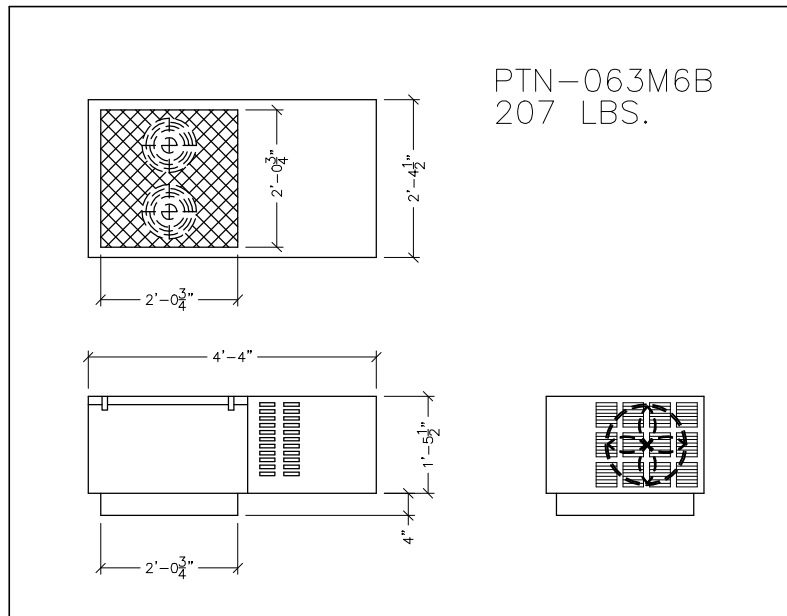
				<b>MODEL:</b>	C888LFWW
				<b>FOR:</b>	HENDRIX
				<b>JOB:</b>	MARY BROWN'S KILDONAN CROSSING WINNIPEG, MANITOBA
ISSUE	REVISIONS	DWN BY	AUTH BY	DATE	
SCALE: N.T.S.				DATE: JUL, 22/15	
DWN BY: J.W.				DWG #: 15585-1	

**curtis**

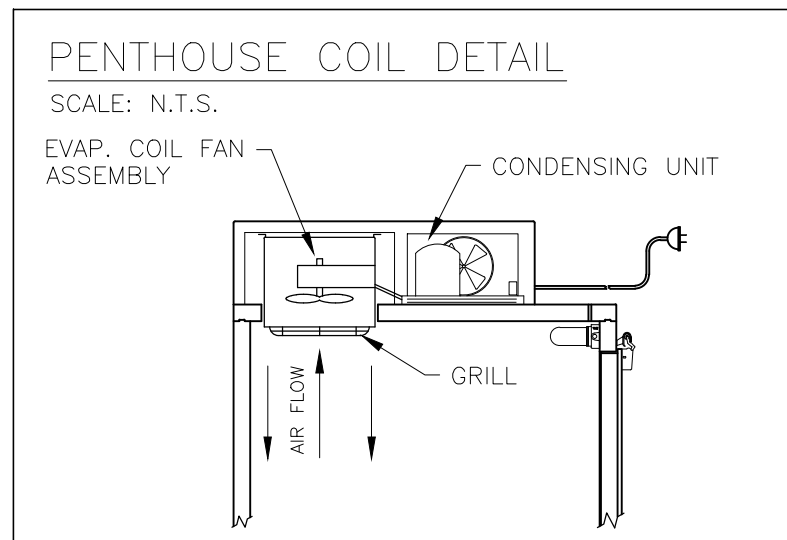
CANADIAN CURTIS REFRIGERATION  
3200 HIGHWAY #7  
VAUGHAN, ONTARIO  
TEL: (905) 660-0110  
FAX: (905) 660-0310

MINIMUM CLEAR WALL TO WALL

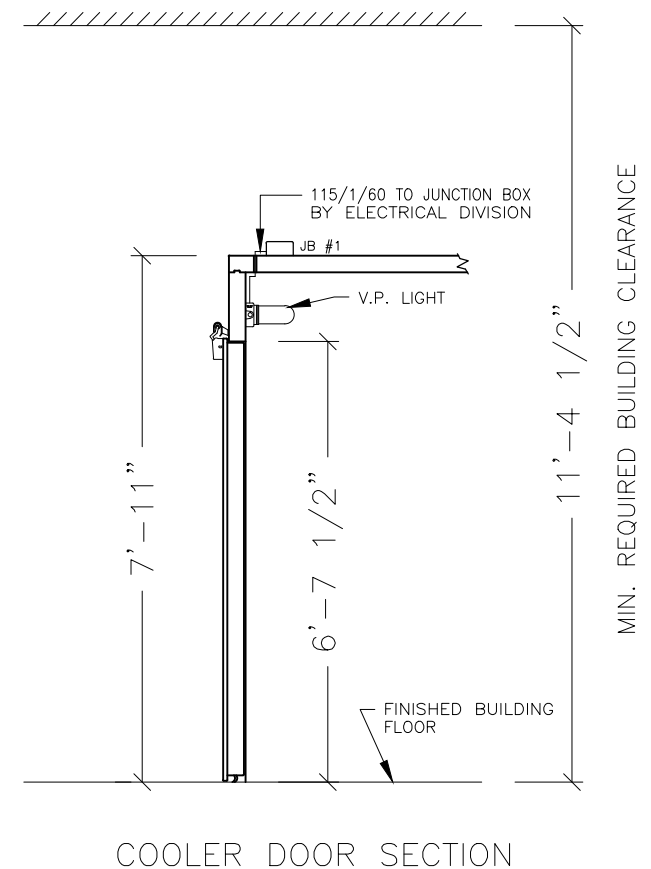




NOTE:  
 THESE PENTHOUSE UNITS NEED A MINIMUM  
 CLEARANCE OF 2'-0" ABOVE UNIT FOR  
 VENTILATION AND SERVICE.



A MINIMUM OF 2" CLEARANCE FOR COOLER  
 A MINIMUM OF 3" CLEARANCE FOR FREEZER  
 IS REQUIRED BETWEEN WALK-IN  
 WALLS AND ALL BUILDING WALLS.



# SPECIFICATIONS

FINISH:	WHITE EMBOSSED INTERIOR AND EXTERIOR.
INSULATION:	3" FOAMED IN PLACE THERMOSET POLYURETHANE.
FLOORS:	NONE. WALK-IN IS TO BE INSTALLED ON FINISHED, LEVEL BUILDING FLOOR. BUILDING FLOOR FINISH BY OTHERS. <u>NOTE:</u> IF FLOOR UNDER COOLER IS NOT SLAB-ON-GRADE THE GENERAL CONTRACTOR MUST PROVIDE ADEQUATE INSULATION ON THE UNDERSIDE OF THE FLOOR SLAB WHERE COOLER IS LOCATED, WITH INSULATION EXTENDING 12" BEYOND ALL SIDES OF WALK-IN ROOM. (PLEASE ADVISE IF BUILDING FLOOR IS TO BE TILED BEFORE OR AFTER WALK-IN INSTALLATION).
DOORS:	ROOM COMPLETE WITH ONE INFITTING DOOR WITH MAGNETIC GASKET, DOOR CLOSER, INSIDE SAFETY RELEASE, BRUSHED ALUMINUM HARDWARE AND PROVISIONS FOR A PADLOCK SUPPLIED BY OTHERS.
LIGHTS:	DOOR PANEL COMPLETE WITH ONE INTERIOR VAPOUR PROOF LIGHT FIXTURE, INTERWIRED TO A THERMOMETER, PILOT LIGHT AND SWITCH, PRE-WIRED TO JUNCTION BOX, ABOVE WALK-IN, (EXTERIOR CEILING), READY FOR FINAL ELECTRICAL CONNECTION BY OTHERS.
TRIM:	VERTICAL TYPE WHERE SHOWN ON DRAWING. (PLEASE SPECIFY TYPES AND SIZES REQUIRED).
REFRIGERATION:	TOP-MOUNTED, SELF-CONTAINED, FACTORY PREWIRED. C/W PENTHOUSE COIL SYSTEMS.

## WALK-IN COOLER 3.3°C/38°F

CONDENSING UNIT:	PTN-063M6B 3/4 H.P. AIR-COOLED 208/230/1/60 R-404A
COMPLETE WITH:	EVAPORATOR COIL EXPANSION VALVE ROOM THERMOSTAT SOLENOID VALVE CORD AND PLUG
WORK BY OTHERS:	FINAL POWER AND INTERWIRING (SEE WIRING DIAGRAMS); ALL PLUMBING AND DRAINS; FREEZER DRAIN LINE HEATER IS SUPPLIED BY CURTIS, BUT PROPER INSTALLATION IS THE RESPONSIBILITY OF A QUALIFIED ELECTRICIAN AND PLUMBER (SEE DETAIL ON THIS DRAWING); CUTTING, CORING AND PATCHING OF BUILDING STRUCTURE; LEVELING AND GROUTING OF BUILDING FLOOR TO ACCOMMODATE WALK-IN ROOMS; FINAL FLOOR FINISHES.

### IMPORTANT NOTE!

AS THESE SYSTEMS ARE AIR COOLED IT IS THE OWNERS RESPONSIBILITY TO PROVIDE ADEQUATE VENTILATION AT THE CONDENSING UNIT LOCATIONS FOR PROPER OPERATION AMBIENT TEMPERATURE MUST NOT EXCEED 90°F, OR DROP BELOW 50°F.

### AMBIENT TEMPERATURE FACTOR

THE COOLING UNIT ON THIS WALK IN HAS THE ABILITY TO MAINTAIN COOLER TEMPERATURES AT 38°F/4°C AND FREEZER TEMPERATURES AT -10°F/-23°C AS LONG AS THE AMBIENT TEMPERATURES AT THE UNIT DOES NOT EXCEED 90°F/32°C.

WARNING – OPERATING THESE UNITS AT HIGH AMBIENT TEMPERATURES WILL DECREASE THE LIFE OF COMPRESSOR, VOID YOUR WARRANTY AND CAUSE HIGHER THAN NORMAL OPERATING COSTS.

### IMPORTANT NOTE!


WALK-IN COOLERS AND FREEZERS MUST BE LOCATED IN A WELL VENTILATED AREA TO PREVENT MOISTURE FROM CONDENSING ON EXTERIOR SURFACES.

### IMPORTANT NOTICE!

PLEASE BE ADVISED THAT IN CONFORMANCE WITH THE INDUSTRY STANDARD PRACTICE, CANADIAN CURTIS REFRIGERATION INC. ASSUMES NO RESPONSIBILITY FOR PRODUCT OR PRODUCTION LOSSES DUE TO MALFUNCTION OR FAILURE OF THE EQUIPMENT, HOWEVER CAUSED. IT IS THE RESPONSIBILITY OF THE EQUIPMENT OWNER OR OPERATOR TO SECURE APPROPRIATE PROTECTIVE INSURANCE.

ALSO NOTE: DO NOT ACTIVATE ELECTRICAL POWER TO WALK-IN DOOR FRAME UNTIL AFTER REFRIGERATION SYSTEM OPERATIONAL.

VENTILATION REQUIREMENTS		
ROOM	COND. UNIT HEAT OF REJECTION	MIN. VENTILATION AT COND. UNIT
COOLER	9,055 BTUH	1,132 CFM.

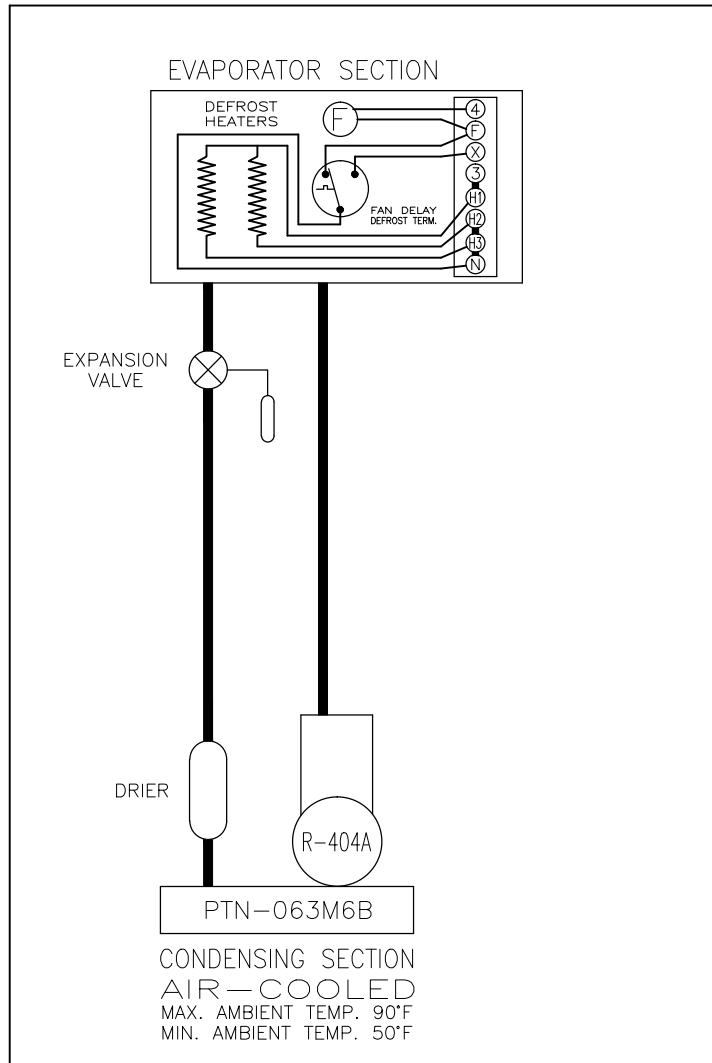
					<b>MODEL:</b>	C888LFWW
					<b>FOR:</b>	HENDRIX
					<b>JOB:</b>	MARY BROWN'S KILDONAN CROSSING WINNIPEG, MANITOBA
ISSUE	REVISIONS			DWN BY	AUTH. BY	DATE
<b>SCALE:</b> N.T.S.				CANADIAN CURTIS REFRIGERATION 3200 HIGHWAY #7 TEL: (905) 660-0110		DATE: JUL, 22/15
DWN BY: J.W.				VAUGHAN, ONTARIO FAX: (905) 660-0310		DWG #: 15585-1

# WALK-IN COOLER ELECTRICAL

SELF-CONTAINED \*PENTHOUSE COIL\*

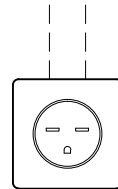
3.3°C/38°F

— INTERWIRING BY CURTIS  
 - - - - - FIELD WIRING BY ELECTRICAL DIVISION  
 — REFRIGERATION LINES

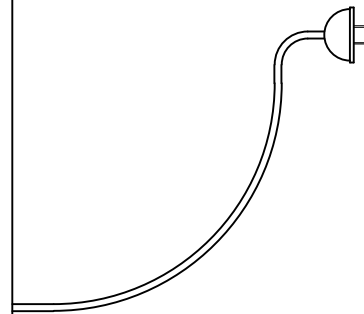


208/230/1/60

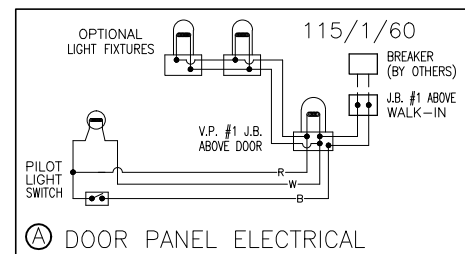
ELECTRICIAN TO PROVIDE  
 ADEQUATE RECEPTACLE  
 FOR SPECIFIED PLUG  
 & VERIFY CIRCUIT/BREAKER  
 CAPACITY (6-15R)



NEMA 6-15P



ITEM	G.P.M.	H.P.	VOLTAGE	AMP. LOAD
CONDENSING UNIT (MCA)	N/A	3/4	208/230/1/60	11.5
MAXIMUM LOADS	A WALK-IN DOOR PANEL		115/1/60	1.0
MAXIMUM LOADS	B CONDENSING UNIT		208/230/1/60	11.5
VENTILATION REQUIREMENTS		HEAT OF REJECTION		MIN. VENTILATION
COOLER		9,055 BTUH		1,132 CFM.



E-101A-SC

					FOR:	HENDRIX	
					JOB:	MARY BROWN'S KILDONAN CROSSING WINNIPEG, MANITOBA	
ISSUE	REVISIONS		DWN BY	AUTH. BY	DATE		
curtis			CANADIAN CURTIS 3200 HIGHWAY #7 TEL: (905) 660-0110		REFRIGERATION VAUGHAN, ONTARIO FAX: (905) 660-0310		DATE: JUL,22/15 DWG #: 15585-2