

NOTES:

1. INSTALLATION TO BE COMPLETED IN ACCORDANCE WITH MANUFACTURERS SPECIFICATIONS.
2. DO NOT SCALE DRAWINGS.
3. CONTRACTORS NOTE: FOR PRODUCT AND COMPANY INFORMATION VISIT www.CADdetails.com/info

REFERENCE NUMBER 3011-121

CSP-1 SERIES BUMP-OUT SIDE SLIDER DRIVE-THRU WINDOW



3011-121

PROTECTED BY COPYRIGHT ©2012 CADdetails.com LTD.

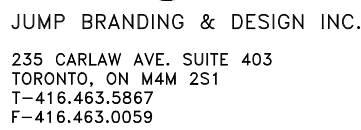
REVISION DATE 05/31/2012
www.CADdetails.com

ELEVATION
1
A501 DRIVE THRU SLIDER WINDOW
SCALE: 1"=1'-0"

LIGHT FIXTURE SCHEDULE

LUMINAIRE SCHEDULE- SWISS HARVEY'S 5260 PROTOTYPE									
TYPE	DESCRIPTION	BASE MAKE/MODEL	VOLT	WATTS	LAMP TYPE	TEMP	MOUNT	REMARKS	
A	6" DIA x 12" BLACK CYLINDER ON STEM, LINE VOLTAGE	PROGRESS LIGHTING # P5741-31/P8741-31	120V	13W	LED	3000K	CEILING @ 11'-0" A.F.F	DINING, SERVRY SYLVANIA LED LAMP LED13/PAR30LN/DIM/830/NFL25/G3 DIMMABLE	
B	6" "RETROFIT" HOUSING AND LED RECESSED DOWNLIGHT REPLACEMENT KIT FOR 5" OR 6" POT LIGHT HOUSINGWITH PARABOLIC LENSE APERTURE.	JUNO, OSRAM # TC2R, LED/RT561200830/CS1/SKU	120V	16W	LED	3000K	CEILING RECESSED	DINING ROOM, WASHROOM, 1200 LUMENS, SYLVANIA LED LAMP LEDRT562100830, DIMMABLE	
B1	6" "RETROFIT" HOUSING AND ADJUSTABLE LED LAMP	JUNO, OSRAM # TC2R, LED/RT6/1500/HO/830	120V	21W	LED	3000K	CEILING RECESSED	LOBBY, 1500 LUMENS, SYLVANIA LED LAMP LED/RT6/1500/HO/830, DIMMABLE	
C	VESTIBULE TRACK HEAD & LAMP HEAD	JUNO #R533BL	120V	13W	LED	3000K	CEILING SURFACED	VESTIBULE, SYLVANIA LAMP LED13/PAR30LN/D1M830/NF	
D	VESTIBULE BLACK AND WHITE FEATURE FIXTURE	BARBICAN # 16-0448 LPS-PATTERN PRINT-SM-18H-OA-NT-BA-4XINC120V	120V	40W	LED	3000K	SUSPENDED @ 9'-10" A.F.F.	VESTIBULE, STEM MOUNT, 48 FIELD CUT-ABLE	
E	60" LONG RECTANGULAR WITH BRUSHED ALUMINUM FINIS	BARBICAN # 16-230-LF-STANDARD FABRIC COLOUR -10WH-60L-SM-OA-NT-BA-LED72-120V	120V	72W	LED	--	SUSPENDED @ 9'-10" A.F.F.	DINING ROOM SWISS CHALET, DIMMABLE	
F	WHITE, TAPERED HANGING CEILING FIXTURE, APPROX. 2'-8.25" LONG BY 2'-7" DIA TAPERED TO 1'-5" DIA. OFF-WHITE FINISH	BARBICAN # 16-5724-LF-STANDARD FABRIC COLOUR-OFF-WHITE -12T/24B-18H-OA-ACW-BA-1XINC40-120V	120V	7W	LED	2700K	SUSPENDED @ 7'-8" A.F.F.	DINING ROOM, TCP ELITE A19 BULB LEDA190D27K, DIMMABLE	
F1	FLUORESCENT IN 2'x4' CEILING WITH K12A PRISMATIC LENS, ELECTRONIC BALLAST, INSTANT START, 3 LAMP 32 WATT.	METALUX # 2GR8332AUNVHB81	120V	3X32	T8	3500K	CEILING RECESSED	BACK OF HOUSE	
F2	FLUORESCENT IN 2'x2' CEILING WITH #12 ACRYLIC LENS, ELECTRONIC BALLAST, INSTANT START, 2 LAMP 32 WATT (24").	METALUX # 2GR82U6T8AUNVHB81	120V	2X32	T8 (24")	3500K	CEILING RECESSED	BACK OF HOUSE	
G	TRACK LIGHTING HEAD & LAMP AND ACCESSORIES - BLACK FINISH, ALL PARTS	JUNO # R533BL - BLACK FINISH	120V	13	LED	3000K	CEILING	DINING ROOM, SYLVANIA LED LAMP LED13/PAR30LN/DIM/830/NFL25/G3 DIMMABLE	
I	KITCHEN HOOD LIGHTS	SUPPLIED BY OTHERS	120V	75W	--	--	--	DIV. 16 TO PROVIDE LAMPS AND CONNECT ONLY. LAMP: SYLVANIA ROUGH SERVICE 2A19, 75W, 120V	
J	BACK DINING ROOM 6 LAMP CHANDELIER	PROGRESS LIGHTING # P4660-20	120V	6X7W	LED	2700K	SUSPENDED @ 8'-10" A.F.F	DINING ROOM, TCP ELITE A19 BULB LEDA190D27K, DIMMABLE	
K	BACK DINING ROOM CYLINDER HANGING PENDANT	RESTORATION HARDWARE # 68060569	120V	40W	INCANDESCENT	--	SUSPENDED @ 8'-10" A.F.F.	DINING ROOM, STANDARD 40T10/CL3M/HO/130V/STD, MED BASE E28, DIMMABLE	
M	8"DIA X 14" METAL WALL SCONCE, BRONZE	HUDSON VALLEY LIGHTING # 9901-DB	120V	7W	LED	2700K	WALL MOUNTED @ 9'-8" A.F.F	LOBBY, TAKE OUT,TCP ELITE A19BULB LEDA190D27K, DIMMABLE	
N	4" "RETROFIT" HOUSING AND LED RECESSED DOWNLIGHT KIT	JUNO, OSRAM # TC2R, LED/RT561200830	120V	16W	LED	3000K	CEILING BULKHEAD RECESSED	DINING ROOM WINDOW BULKHEAD, SYLVANIA LAMP LED/RT561200830, DIMMABLE	
P	12"DIA X 9.25" BRONZE HANGING PENDANT	PROGRESS LIGHTING # P5723-7130K9, STEM KIT#P8601-20	120V	17W	LED	3000K	SUSPENDED @ 9'-10" A.F.F	HARVEY'S INTERIOR	
EXLT-1	HARVEY'S EXTERIOR METAL AWNING & LIGHT BAR	KWIK SIGNS	120V	--	--	--	WALL MOUNTED	AWNING	
EXLT-2	HARVEY'S EXTERIOR WALL SCONCE	PROGRESS LIGHTING # P5723-7130K9	120V	17W	LED	3000K	WALL MOUNTED	EXTERIOR WALLS, SYLVANIA LAMP LED8PAR20/DIM/830/NFL2	
EXLT-3	SWISS CHALET EXTERIOR WALL SCONCE, 5" UP/DOWN CYLINDER	PROGRESS LIGHTING # P5675-31/30K	120V	17W	LED	3000K	WALL MOUNTED	EXTERIOR WALLS, SYLVANIA LAMP LED8PAR20/DIM/830/NFL2	
WP-1	EXTERIOR WALL PACK WITH PHOTO CELL AT BACK DOOR	COOPER # XTOR2A-N-PC1-120	120V	20W	LED	3500K	WALLMOUNTED	EXTERIOR WALLS	
EMERGENCY LIGHTING									
X	WHITE ALL METAL EXIT SIGN WITH GREEN PICTOGRAM, AC/ STANDARD DC.	BEGHELLI # SL-RMLU0LRM OR LUMACELL, EMERGH-LITE, OR READY-LITE EQUIVALENT	120 AC 12V DC	2W	LED	--	UNIVERSAL MOUNT	"EXIT SIGN FOR BACK AREA	
X1	EXTRUDED ALUMINUM EXIT SIGN WITH GREEN PICTOGRAM, AC/ STANDARD DC.	BEGHELLI # QR-RMLU0LRM OR LUMACELL, EMERGH-LITE, OR READY-LITE EQUIVALENT	120 AC 12V DC	2W	LED	--	UNIVERSAL MOUNT	"EXIT SIGN FOR FRONT OF HOUSE	
X2	EXTRUDED ALUMINUM EXIT COMBO UNIT WITH GREEN PICTOGRAM C/W 12V 72W BATTERY C/W 2X12V 5W LED LAMPS.	BEGHELLI # QR-RM-12-72-L10LRM BTMR2-12V-5W OR LUMACELL, EMERGH-LITE, OR READY-LITE EQUIVALENT	120 AC 12V DC	2W 2X5W	LED	--	UNIVERSAL MOUNT	"PLACED OVER EXIT DOORS "USE #10 GAUGE TO FEED REMOTES OR ENSURE #12 GAUGE<5% VOLTAGE DROP.	
	DIE CAST MR16 DOUBLE REMOTE HEADS, 2x12V 5W MR16 LED LAMP	BEGHELLI # BTMR2-12V-5W-VH OR LUMACELL, EMERGH-LITE, OR READY-LITE EQUIVALENT	12V DC	2X5W	MR 16 LED	--	CEILING MOUNTED OR WALL MOUNTED AT 96"	* MICRO QUARTZ OR TUNGSTEN LAMP IS NOT ACCEPTABLE	
	CENTRAL EMERGENCY BATTERY UNIT SHALL BE EQUAL TO BEGHELLI NOVA SERIES CATALOG #NV12-200-(BTMR2-3W)LD)AT.FDS. 12V DC, 200W OR CAPACITY AS SPECIFIED ON DRAWINGS. SEALED LEAD BATTERY, 5 CIRCUITS FUSED (10A) PANELBOARD, AUTO-TEST SELF DIAGNOSTICS, AND (IF INDICATED ON DRAWING, 2-5W LED REMOTE HEADS AND L.V. DISCONNECT SWITCH) AND MOUNTING PLATFORM.		120 AC 12V DC	110W 2X5W	-- LED	--	WALL MOUNTED AT 96"	POST MAINTENANCE INSTRUCTIONS ON FRONT OF UNIT.	
NOTES: 1. FLUORESCENT FIXTURE BALLASTS MUST COMPLY WITH REQUIREMENTS OF ALL REBATE & ASHRAE 2010 REQUIREMENTS. 2. LAMP SHALL BE ENERGY EFFICIENT TYPE. 3. COORDINATE MOUNTING HEIGHT OF FIXTURES WITH ARCHITECTURAL DRAWINGS. 4. GENERAL CONTRACTOR TO CONFIRM LEAD TIME OF ALL LIGHT FIXTURES PRIOR TO COMMENCEMENT OF CONSTRUCTION. 5. ALL OUTDOOR FIXTURES TO HAVE LIQUID-TIGHT CONNECTION 6. LIGHTING PACKAGE SUPPLIED BY ROBERTSON ELECTRIC, CONTACT LISA FRASER AT 416-948-0760 (cell) OR LFraser@robertson-electric.com FOR PRICE AND DELIVERY									NO EXCEPTIONS. NO ALTERNATES ACCEPTED.

CONCEPT/DESIGN



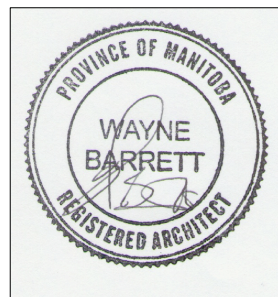
NOTICE:

NONE OF THE DRAWINGS AND/OR DETAILS ISSUED
FOR THIS PROJECT ARE TO BE SCALED.

IT IS THE RESPONSIBILITY OF THE CONTRACTOR TO VERIFY ON SITE, ALL DIMENSIONS, NOTES AND DETAILS PRIOR TO CONSTRUCTION START. ANY DISCREPANCIES ARE TO BE REPORTED TO THE ARCHITECT. ANY EXTRAS, DELAYS AND/OR RESULTING IN CHANGES RESULTING IN FAILURE TO DO SO WILL BE THE SOLE RESPONSIBILITY OF THE CONTRACTOR.

ALL DRAWINGS, SPECIFICATIONS AND DETAILS
ISSUED FOR THIS PROJECT ARE THE PROPERTY
OF THE ARCHITECT. UNAUTHORIZED USE IS
PROHIBITED.

REVISIONS:

[illegible]

PROJECT TITLE

SWISS HARVEY'S 5260
STORE# 1970/2837

LOCATION:

655 EMPRESS ST
WINNIPEG, MANITOBA
R3G 3P7

SHEET TITLE

LIGHTING SCHEDULE

DRIVE THRU WINDOW SPEC

ISSUED: MAY 20, 2015

DATE: MAY 11, 2015

DRAWN: MDC

CHECKED: WME

SCALE: AS NOTED

PROJECT No: BA/1509

DRAWING No:

A501